



▶ METALLIC BALLOONS CONDUCT ELECTRICITY AND CAN CAUSE POWER OUTAGES IF RELEASED INTO THE AIR.



▶ DO NOT FLY KITES NEAR POWER LINES. FATAL RESULTS CAN OCCUR.



▶ PRUNING TREES NEXT TO POWER LINES CAN BE DANGEROUS TO YOU

# Colton Electric

## Utility

### KEEP AWAY FROM ALL DOWN POWERLINES

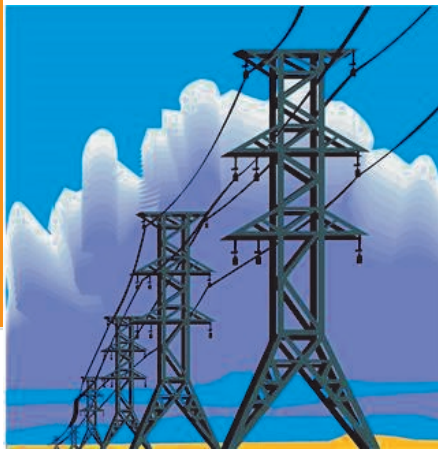
### *Safety Tips*

#### Be Prepared when a power outage occurs

- A power line that touches the ground can shock or kill you even if you do not touch it.
- Always assume that contact with any line can be lethal.
- Be aware that you can be electrocuted by touching a power line directly or by touching a conductive material (such as a metal ladder, antenna, pipe, kite) and, at the same time, the earth or any grounded item (such as metal siding or a downspout).

#### Down Powerline

Call 911



1. Don't open your freezer or fridge unless it is absolutely necessary. A full freezer will keep food frozen for 24 to 36 hours if the door remains closed.
2. Never use charcoal or gas barbecues, camping heating equipment, or home generators indoors. They give off carbon monoxide. Because you can't smell or see it, carbon monoxide can cause health problems and is life-threatening.
3. Turn off all tools, appliances and electronic equipment, and turn the thermostat (s) for the home heating system down to minimum to prevent damage from a power surge when power is restored. Also, power can be restored more easily when there is not a heavy load on the electrical system.



City of Colton  
ELECTRIC UTILITY



Report an outage or a hazard  
(909) 370-5104

